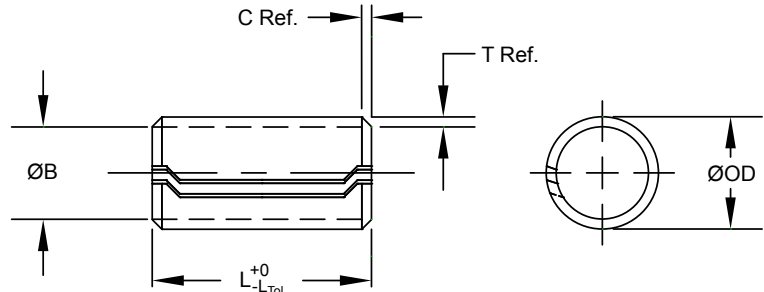




**Dowel Bushings** are used to locate components in conjunction with bolts which pass through the inside of the Dowel after it has been installed. Separate holes for locating pins are eliminated. The hardened Dowels also absorb shear loads, isolating the bolts from these forces.

### Series DB100



#### MATERIAL

**B** High Carbon Steel

#### FINISH

**K** Plain, Oiled

#### DIMENSIONAL DATA

Metric									
Nominal Bolt Diameter	Min. ØID Installed <sup>1</sup>	ØOD		Wall Thickness T	Chamfer		Recommended Ø Hole Size		Min. Single Shear (kN) <sup>2</sup>
		Min.	Max.		C Length	ØB Max.	Min.	Max.	
6	6.20	7.92	8.18	0.70	1.40	7.50	7.67	7.80	10.9
8	8.20	10.35	10.61	0.90	1.40	9.85	10.10	10.23	18.7
10	10.20	12.75	13.01	1.10	1.40	12.20	12.50	12.63	28.4
12	12.25	15.50	15.76	1.45	1.80	14.85	15.25	15.38	45.4
16	16.25	20.25	20.51	1.80	1.80	19.50	20.00	20.13	74.6

Inch										
Nominal Bolt Diameter	Min. ØID Installed <sup>1</sup>	ØOD		Wall Thickness T	Chamfer		Recommended Ø Hole Size		Min. Single Shear (lbs.) <sup>2</sup>	
		Min.	Max.		C Length	ØB Max.	Min.	Max.		
.250	1/4	.256	.325	.335	.028	.050	.308	.315	.320	2,500
.312	5/16	.318	.401	.411	.035	.050	.381	.391	.396	4,000
.375	3/8	.381	.479	.489	.042	.050	.457	.469	.474	5,750
.500	1/2	.510	.640	.650	.057	.060	.615	.630	.635	10,500

Metric						
Nominal Bolt Diameter	Length					
	12	15	20	25	30	35
6						
8						
10			LENGTH TOLERANCE + 0.0mm - 1.0mm			
12						
16						

Inch				
Nominal Bolt Diameter		Length		
		.500 1/2	.750 3/4	1.000 1
.250	1/4			
.312	5/16		LENGTH TOLERANCE +.000" -.030"	
.375	3/8			
.500	1/2			

<sup>1</sup> When installed in recommended hole.

<sup>2</sup> Single shear minimum, tested in accordance with ISO 8749 and ASME B18.8.2 Appendix B.

Testing can only be performed on Dowels greater than two diameters in length.

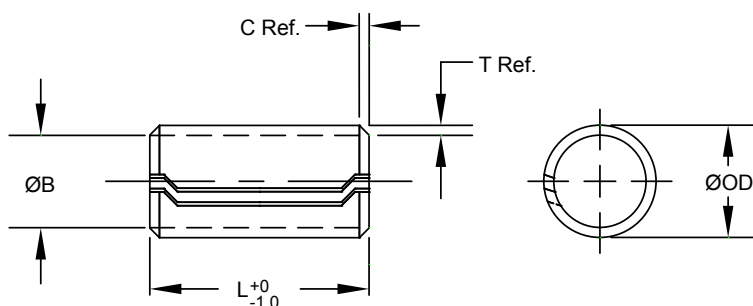
- On special order plated parts, all dimensions apply prior to plating.
- Special lengths and sizes available upon request.

**To Order:** BUSH, Nominal Dowel Size x Length, Material, Finish, Series  
**Example:** BUSH 10 x 25 BK DB100



**Spring Dowels** are used to accurately locate components with respect to each other. They are formed around arbors to assure roundness. It is recommended that one half the hole tolerance be used for the fixed location of the Dowel and one half for the hole in the mating part.

### Series SD200



#### MATERIAL

**B** High Carbon Steel

#### FINISH

**K** Plain, Oiled

#### DIMENSIONAL DATA

Metric								
Nominal Dowel Diameter	ØOD		Wall Thickness T	Chamfer		Recommended Ø Hole Size		Min. Single Shear (kN) <sup>1</sup>
	Min.	Max.		C Length	ØB Max.	Min.	Max.	
6	6.25	6.50	0.55	1.00	5.85	6.00	6.13	6.6
8	8.25	8.50	0.70	1.40	7.80	8.00	8.13	11.5
10	10.25	10.50	0.90	1.40	9.75	10.00	10.13	18.5
12	12.25	12.50	1.10	1.40	11.70	12.00	12.13	27.1

Metric					
Nominal Dowel Diameter	Length				
	12	15	20	25	30
6					
8					
10					
12					

<sup>1</sup> Single shear minimum, tested in accordance with ISO 8749. Testing can only be performed on Dowels greater than two diameters in length.

- On special order plated parts, all dimensions apply prior to plating.
- Special lengths and sizes available upon request.
- Inch sizes available upon request.

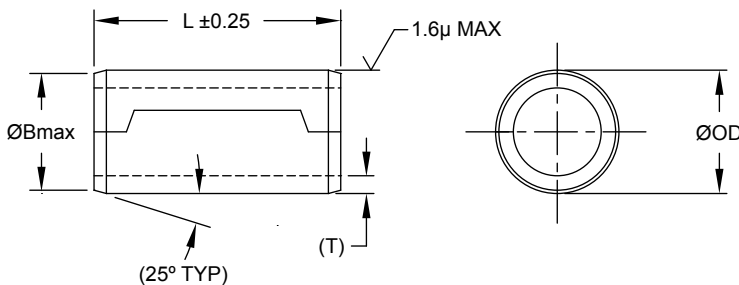
**To Order:** BUSH, Nominal Dowel Size x Length, Material, Finish, Series  
**Example:** BUSH 8 x 20 BK SD200

# SPIROL®

## GROUND HOLLOW DOWELS

### Design-in SPIROL's Series GD100 Ground Hollow Dowels for Precision Alignment and Substantial Cost Savings

**SPIROL** Ground Hollow Dowels are designed to be direct replacements for standard Ground Solid Dowels per ISO 8734. They are used where centerline tolerancing and precision alignment are required.



- Precision ground outside diameters maintain critical alignment within 20µm.
- A 1.6µm surface finish and well-defined chamfers prevent shaving or scraping during installation.
- The roll-formed design yields substantial cost savings over Solid Dowels.
- The hollow feature offers weight savings over Solid Dowels and clearance for bolts, fluids, or gases.

#### TECHNICAL SPECIFICATIONS

STANDARD MATERIAL	STANDARD FINISH
<b>F</b> Low Carbon Steel	<b>K</b> Plain, Oiled

NOMINAL DIAMETER	ØOD (m6)		WALL THICKNESS T	ØB MAX.	RECOMMENDED Ø HOLE SIZE <sup>1</sup> (M7)		RECOMMENDED Ø HOLE SIZE <sup>2</sup> (H7)	
	MIN.	MAX.			MIN.	MAX.	MIN.	MAX.
6	6.004	6.012	0.9	5.80	5.988	6.000	6.000	6.012
8	8.006	8.015	1.2	7.80	7.985	8.000	8.000	8.015
10	10.006	10.015	1.6	9.75	9.985	10.000	10.000	10.015
12	12.007	12.018	1.8	11.75	11.982	12.000	12.000	12.018
16	16.007	16.018	2.2	15.70	15.982	16.000	16.000	16.018

NOMINAL DIAMETER	LENGTH							
	6	8	10	12	15	20	25	30
6								
8								
10								
12								
16								

- Maximum recommended interference fit for primary retention of Dowel.
  - Recommended transitional fit in mating component.
- All dimensions in millimeters.
  - T refers to strip thickness prior to forming & grinding.
  - Refer to ISO 286 for dimensional and fit specifications.
  - Special lengths and sizes available upon request.

**To Order:** GHDL, Nominal Dowel Size x Length, Material, Finish, Series  
**Example:** GHDL 8 x 15 FK GD100



Please refer to [www.SPIROL.com](http://www.SPIROL.com) for current specifications and standard product offerings.

**SPIROL** Application Engineers will review your application needs and work with you to recommend the optimum solution. One way to start the process is to visit our **Optimal Application Engineering** portal at **SPIROL.com**.

## Technical Centers

### Americas

**SPIROL International Corporation**  
30 Rock Avenue  
Danielson, Connecticut 06239 U.S.A.  
Tel. +1 860 774 8571  
Fax. +1 860 774 2048

**SPIROL Shim Division**  
321 Remington Road  
Stow, Ohio 44224 U.S.A.  
Tel. +1 330 920 3655  
Fax. +1 330 920 3659

**SPIROL Canada**  
3103 St. Etienne Boulevard  
Windsor, Ontario N8W 5B1 Canada  
Tel. +1 519 974 3334  
Fax. +1 519 974 6550

**SPIROL Mexico**  
Avenida Avante #250  
Parque Industrial Avante Apodaca  
Apodaca, N.L. 66607 Mexico  
Tel. +52 81 8385 4390  
Fax. +52 81 8385 4391

**SPIROL Brazil**  
Rua Mafalda Barnabé Soliane, 134  
Comercial Vitória Martini, Distrito Industrial  
CEP 13347-610, Indaiatuba, SP, Brazil  
Tel. +55 19 3936 2701  
Fax. +55 19 3936 7121

### Europe

**SPIROL France**  
Cité de l'Automobile ZAC Croix Blandin  
18 Rue Léna Bernstein  
51100 Reims, France  
Tel. +33 3 26 36 31 42  
Fax. +33 3 26 09 19 76

**SPIROL United Kingdom**  
17 Princewood Road  
Corby, Northants  
NN17 4ET United Kingdom  
Tel. +44 1536 444800  
Fax. +44 1536 203415

**SPIROL Germany**  
Ottostr. 4  
80333 Munich, Germany  
Tel. +49 89 4 111 905 71  
Fax. +49 89 4 111 905 72

**SPIROL Spain**  
08940 Cornellà de Llobregat  
Barcelona, Spain  
Tel. +34 93 193 05 32  
Fax. +34 93 193 25 43

**SPIROL Czech Republic**  
Sokola Tůmy 743/16  
Ostrava-Mariánské Hory 70900  
Czech Republic  
Tel/Fax. +420 417 537 979

**SPIROL Poland**  
ul. Solec 38 lok. 10  
00-394, Warszawa, Poland  
Tel. +48 71 399 44 55

### Asia Pacific

**SPIROL Asia Headquarters**  
1st Floor, Building 22, Plot D9, District D  
No. 122 HeDan Road  
Wai Gao Qiao Free Trade Zone  
Shanghai, China 200131  
Tel. +86 21 5046 1451  
Fax. +86 21 5046 1540

**SPIROL Korea**  
160-5 Seokchon-Dong  
Songpa-gu, Seoul, 138-844, Korea  
Tel. +86 (0) 21 5046-1451  
Fax. +86 (0) 21 5046-1540

e-mail: [info@spirol.com](mailto:info@spirol.com)