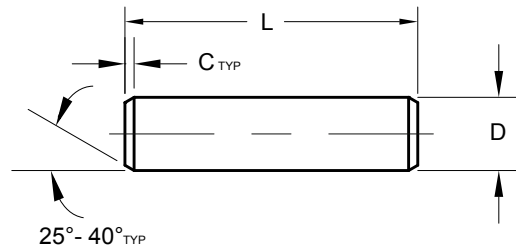


# SPIROL® STRAIGHT PINS

## Straight Pin Series DP100



### DIMENSIONAL DATA

Nominal Diameter	INCH SPECIFICATIONS							METRIC SPECIFICATIONS						
		5/64 .078	3/32 .094	1/8 .125	5/32 .156	3/16 .187	1/4 .250		2	2.5	3	4	5	6
Diameter "D"	Min.	.0761	.0917	.1230	.1542	.1855	.2480	Min.	1.95	2.45	2.95	3.95	4.95	5.95
	Max.	.0781	.0937	.1250	.1562	.1875	.2500	Max.	2.00	2.50	3.00	4.00	5.00	6.00
Chamfer "C"	Min.	.005	.008	.008	.010	.015	.015	Min.	0.15	0.2	0.2	0.3	0.4	0.4
Length "L"	.250							6						
	.312							8						
	.375							10						
	.437							12						
	.500							14						
	.562			Length Tolerance				16	Length Tolerance					
	.625			± .010				20	± 0.25					
	.750							24						
	.875							26						
	1.000							30						
	1.250							35						
	1.500							40						
	1.750							45						
2.000							50							

#### Notes:

- Please consult SPIROL Engineering for recommended hole sizes when used as a press-fit.
- Other diameters and lengths available on request.

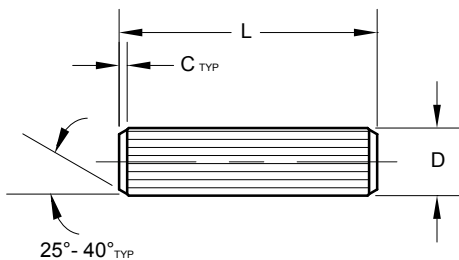
#### Part Number Code

TO ORDER: SLDP (Nominal Diameter)x(Length)(Material)(Finish)(Pin Series Number)

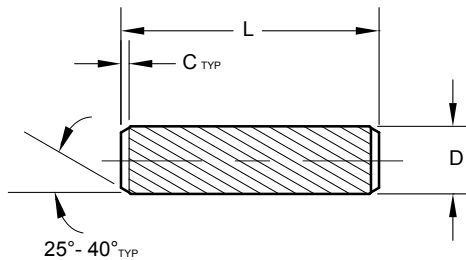
EXAMPLE: SLDP .156 x 1.250 FK DP100

# SPIROL® KNURLED PINS

## Straight Knurl Series KP200



## Helical Knurl Series KP300



## DIMENSIONAL DATA

Nominal Diameter	INCH SPECIFICATIONS							METRIC SPECIFICATIONS						
		5/64	3/32	1/8	5/32	3/16	1/4		2	2.5	3	4	5	6
Diameter "D"	Min.	.084	.099	.131	.163	.195	.256	Min.	2.20	2.70	3.25	4.25	5.25	6.25
	Max.	.088	.103	.136	.168	.200	.262	Max.	2.30	2.80	3.35	4.35	5.35	6.35
Chamfer "C"	Ref.	.005	.008	.008	.010	.015	.015	Ref.	0.15	0.2	0.2	0.3	0.4	0.4
Recommended Hole	Min.	.078	.094	.125	.156	.188	.250	Min.	2.00	2.50	3.00	4.00	5.00	6.00
	Max.	.080	.096	.127	.159	.191	.253	Max.	2.06	2.56	3.06	4.08	5.08	6.08
Length "L"	.250	*						6	*					
	.312	*						8	*					
	.375	*						10	*					
	.437	*						12	*					
	.500	*						14	*					
	.562	*	Length Tolerance					16	*	Length Tolerance				
	.625	*	± .010					20		± 0.25				
	.750							24						
	.875							26						
	1.000							30						
	1.250							35						
	1.500							40						

\* Denotes sizes only available in KP300.

### Notes:

- Recommended hole sizes are given for average conditions. Actual required hole size is dependent on length of knurl engagement and hardness of host material.
- Other diameters, lengths and alternative knurl locations available on request.

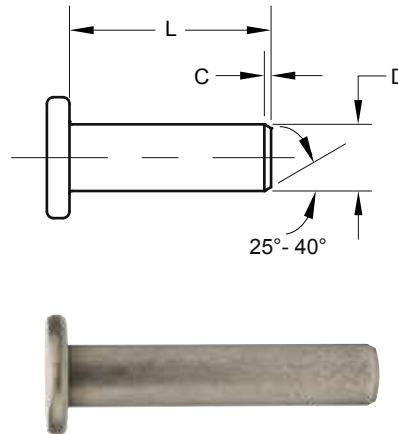
### Part Number Code

TO ORDER: SLDP (Nominal Diameter)x(Length)(Material)(Finish)(Pin Series Number)

EXAMPLE: SLDP 3 x 20 FK KP300

# SPIROL<sup>®</sup> HEADED PINS

## Headed Pin Series FH100



### DIMENSIONAL DATA

Nominal Diameter ▶	INCH SPECIFICATIONS							METRIC SPECIFICATIONS						
		5/64 .078	3/32 .094	1/8 .125	5/32 .156	3/16 .187	1/4 .250		2	2.5	3	4	5	6
Diameter "D"	Min.	.0761	.0917	.1230	.1542	.1855	.2480	Min.	1.95	2.45	2.95	3.95	4.95	5.95
	Max.	.0781	.0937	.1250	.1562	.1875	.2500	Max.	2.00	2.50	3.00	4.00	5.00	6.00
Head Diameter	Min.	.132	.156	.209	.263	.312	.425	Min.	3.30	4.20	4.95	6.75	8.50	10.20
	Max.	.142	.172	.229	.283	.338	.451	Max.	3.70	4.60	5.45	7.25	9.10	10.80
Head Thickness	Min.	.022	.028	.036	.048	.060	.077	Min.	0.55	0.70	0.90	1.20	1.50	1.90
	Max.	.030	.036	.048	.060	.073	.090	Max.	0.75	0.90	1.20	1.50	1.80	2.20
Chamfer "C"	Min.	.005	.008	.008	.010	.015	.015	Min.	0.15	0.2	0.2	0.3	0.4	0.4
Length "L"	.250							6						
	.312							8						
	.375							10						
	.437							12						
	.500							14						
	.562				Length Tolerance			16		Length Tolerance				
	.625				± .010			20		± 0.25				
	.750							24						
	.875							26						
	1.000							30						
	1.250							35						
	1.500							40						
	1.750							45						
2.000							50							

#### Notes:

- Please consult SPIROL Engineering for recommended hole sizes when used as a press-fit.
- Other diameters and lengths available on request.
- Series FH100 is available to order with a round head.

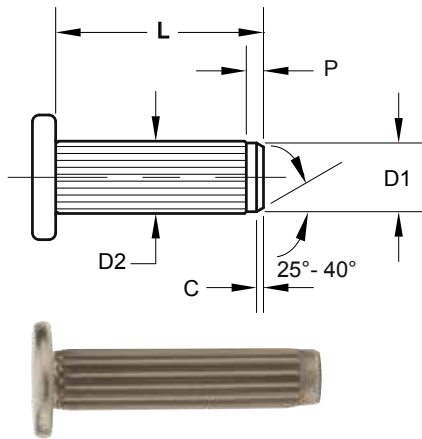
#### Part Number Code

TO ORDER: SLDP (Nominal Diameter)x(Length)(Material)(Finish)(Pin Series Number)

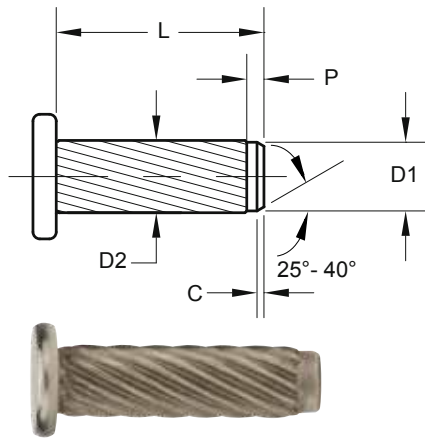
EXAMPLE: SLDP 4 x 16 FK FH100

# SPIROL<sup>®</sup> HEADED KNURLED PINS

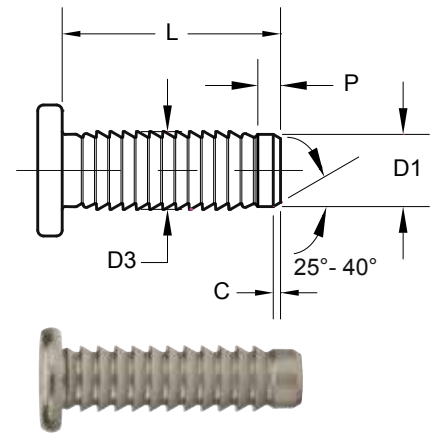
## Straight Knurl Series FH200



## Helical Knurl Series FH300



## Barbed Series FH400



## DIMENSIONAL DATA

Nominal Diameter	INCH SPECIFICATIONS						METRIC SPECIFICATIONS							
		5/64 .078	3/32 .094	1/8 .125	5/32 .156	3/16 .187	1/4 .250		2	2.5	3	4	5	6
Pilot Diameter "D1"	Min.	.0761	.0917	.1230	.1542	.1855	.2480	Min.	1.95	2.45	2.95	3.95	4.95	5.95
	Max.	.0781	.0937	.1250	.1562	.1875	.2500	Max.	2.00	2.50	3.00	4.00	5.00	6.00
Diameter "D2"	Min.	.084	.099	.131	.163	.195	.256	Min.	2.20	2.70	3.25	4.25	5.25	6.25
	Max.	.088	.103	.136	.168	.200	.262	Max.	2.30	2.80	3.35	4.35	5.35	6.35
Diameter "D3"	Min.	.092	.107	.139	.170	.201	.264	Min.	2.36	2.86	3.36	4.36	5.36	6.36
	Max.	.097	.112	.144	.175	.206	.269	Max.	2.46	2.96	3.46	4.46	5.46	6.46
Head Diameter	Min.	.132	.156	.209	.263	.312	.425	Min.	3.30	4.20	4.95	6.75	8.50	10.20
	Max.	.142	.172	.229	.283	.338	.451	Max.	3.70	4.60	5.45	7.25	9.10	10.80
Head Thickness	Min.	.022	.028	.036	.048	.060	.077	Min.	0.55	0.70	0.90	1.20	1.50	1.90
	Max.	.030	.036	.048	.060	.073	.090	Max.	0.75	0.90	1.20	1.50	1.80	2.20
Chamfer "C"	Ref.	.005	.008	.008	.010	.015	.015	Ref.	0.15	0.2	0.2	0.3	0.4	0.4
Pilot Length "P"	Ref.	.026	.031	.039	.046	.062	.078	Ref.	0.6	0.8	1	1.2	1.5	2
Recommended Hole	Min.	.078	.094	.125	.156	.188	.250	Min.	2.00	2.50	3.00	4.00	5.00	6.00
	Max.	.080	.096	.127	.159	.191	.253	Max.	2.06	2.56	3.06	4.08	5.08	6.08
Length "L"	.250	*						6	*					
	.312	*						8	*					
	.375	*		Length Tolerance				10	*		Length Tolerance			
	.500			± .010				12			± 0.25			
	.625							16						
	.750							20						
	1.000							24						

\* Denotes sizes only available in FH300 and FH400.

### Notes:

- Recommended hole sizes are given for average conditions. Actual required hole size is dependent on length engagement and hardness of host material.
- Other diameters, lengths and alternative knurl locations available on request.
- Series FH200, FH300 and FH400 are available to order with round heads.

### Part Number Code

TO ORDER: SLDP (Nominal Diameter)x(Length)(Material)(Finish)(Pin Series Number)

EXAMPLE: SLDP .250 x .625 FK FH300



**Innovative fastening solutions.  
Lower assembly costs.**

## Technical Centers

### Americas

**SPIROL International Corporation**  
30 Rock Avenue  
Danielson, Connecticut 06239 U.S.A.  
Tel. +1 860 774 8571  
Fax. +1 860 774 2048

**SPIROL Shim Division**  
321 Remington Road  
Stow, Ohio 44224 U.S.A.  
Tel. +1 330 920 3655  
Fax. +1 330 920 3659

**SPIROL Canada**  
3103 St. Etienne Boulevard  
Windsor, Ontario N8W 5B1 Canada  
Tel. +1 519 974 3334  
Fax. +1 519 974 6550

**SPIROL Mexico**  
Avenida Avante #250  
Parque Industrial Avante Apodaca  
Apodaca, N.L. 66607 Mexico  
Tel. +52 81 8385 4390  
Fax. +52 81 8385 4391

**SPIROL Brazil**  
Rua Mafalda Barnabé Soliane, 134  
Comercial Vitória Martini, Distrito Industrial  
CEP 13347-610, Indaiatuba, SP, Brazil  
Tel. +55 19 3936 2701  
Fax. +55 19 3936 7121

### Europe

**SPIROL France**  
Cité de l'Automobile ZAC Croix Blandin  
18 Rue Léna Bernstein  
51100 Reims, France  
Tel. +33 3 26 36 31 42  
Fax. +33 3 26 09 19 76

**SPIROL United Kingdom**  
17 Princewood Road  
Corby, Northants  
NN17 4ET United Kingdom  
Tel. +44 1536 444800  
Fax. +44 1536 203415

**SPIROL Germany**  
Ottostr. 4  
80333 Munich, Germany  
Tel. +49 89 4 111 905 71  
Fax. +49 89 4 111 905 72

**SPIROL Spain**  
08940 Cornellà de Llobregat  
Barcelona, Spain  
Tel. +34 93 669 31 78  
Fax. +34 93 193 25 43

**SPIROL Czech Republic**  
Sokola Tůmy 743/16  
Ostrava-Mariánské Hory 70900  
Czech Republic  
Tel/Fax. +420 417 537 979

**SPIROL Poland**  
ul. Solec 38 lok. 10  
00-394, Warszawa, Poland  
Tel. +48 510 039 345

### Asia Pacific

**SPIROL Asia Headquarters**  
1st Floor, Building 22, Plot D9, District D  
No. 122 HeDan Road  
Wai Gao Qiao Free Trade Zone  
Shanghai, China 200131  
Tel. +86 21 5046 1451  
Fax. +86 21 5046 1540

**SPIROL Korea**  
160-5 Seokchon-Dong  
Songpa-gu, Seoul, 138-844, Korea  
Tel. +86 (0) 21 5046-1451  
Fax. +86 (0) 21 5046-1540

e-mail: [info@spirol.com](mailto:info@spirol.com)

**SPIROL.com**



Please refer to [www.SPIROL.com](http://www.SPIROL.com) for current specifications and standard product offerings.

**SPIROL** Application Engineers will review your application needs and work with you to recommend the optimum solution. One way to start the process is to visit our **Optimal Application Engineering** portal at **SPIROL.com**.